



PT Bina Daya Bentala, a company affiliated to APP/Sinar Mas, continues of clearcutting Libo peat forest block in Riau, which closes to extinction



**Investigative Report
Published by Eyes on the Forest
June 2011**

Eyes on the Forest (EoF) is a coalition of environmental NGOs in Riau, Sumatra: WALHI Riau, Jikalahari "Riau Forest Rescue Network", and WWF-Indonesia, Riau Program. EoF monitors the status of natural forests in Riau Province, Sumatra and disseminates the information to readers around the world.

For more information about Eyes on the Forest, go to <http://www.eyesontheforest.or.id>

Email:

eof@eyesontheforest.or.id

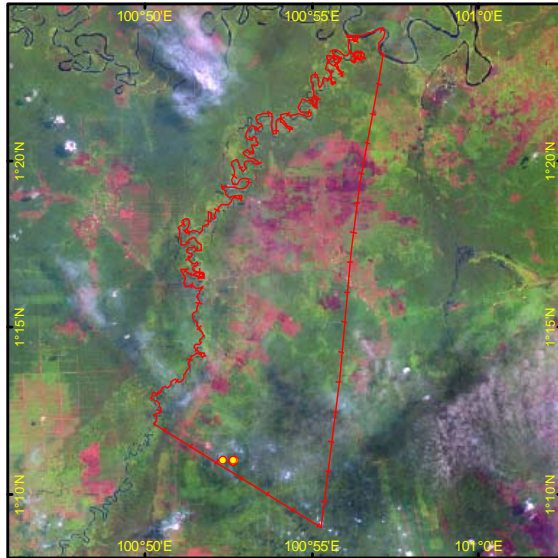
PT Bina Daya Bentala, APP/Sinar Mas timber supplier, likely destroys remaining devastated Libo forest block in Riau Province

In 2009 and 2010, PT Bina Daya Bentala, a developer of industrial timber plantation (HTI), which affiliated to Asia Pulp & Paper / Sinar Mas Group, obtained natural forest clearance permits covering totally 12,793 hectares. In 2009, PT Bina Daya Bentala (BDB) obtained logging permit of approximately 8,136 hectares, based upon Decree SK. 11/BPHT-3/2009, dated 30 April 2009 and in the following year the company was granted an annual cutting permit for 4,603 hectares based on Decree SK 22/BPHT-3/2010, dated 25 April 2010. The potential mixed tropical hardwoods were felled is quite huge, approximately **1,259,778 m³**.

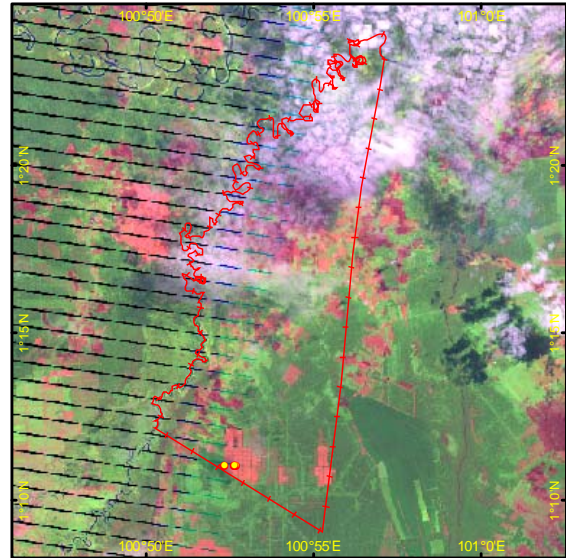
PT Bina Daya Bentala is located in Libo forest block, one of remaining forest blocks in Riau Province. Libo peat forest block is coming closer to extinction and it turned out to be fragments of remaining natural forests. Libo's death history gives a poor prospect for the other remaining forest blocks in Riau that located on the same path to extinction without any end road. Libo is a home to more than 100 herds of elephants. In 2006, many wildlife mammals died due to the loss of habitat which lead to conflicts with the encroachers and plantation managers. Libo, now changes from an extremely excellent forest to a remaining forest and is now just a big wound on peatlands which has a dense network of canals that drained and resulted in greenhouse gas emissions in large quantity annually from day to day.

This investigation highlighted constant monitoring by Eyes on the Forest (EoF) in May 2010 when the logged natural woods from PT Bina Daya Bentala concession were received by PT Indah Kiat Pulp and Paper, a pulp mill of APP/Sinar Mas Group in Riau province. Until May 2010 the total area that has been clearcut by PT BDB has reached 3,000 hectares and EoF team on the spot found 6 units of excavators and 6 trucks were caught red handed preparing to load chip woods.

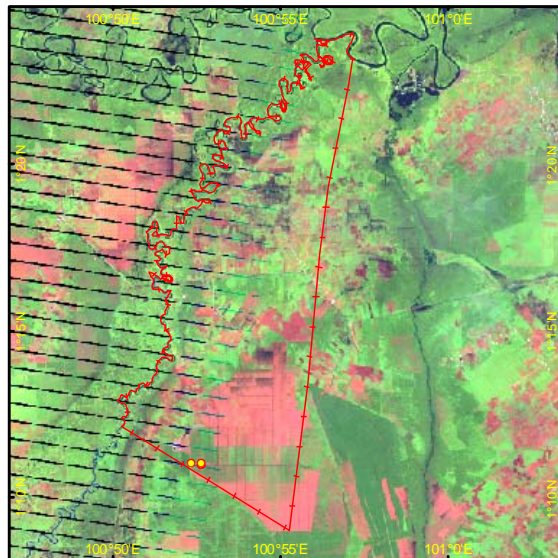
This report begins with a long distance monitoring through satellite imagery and displayed in an analyzed map as below:



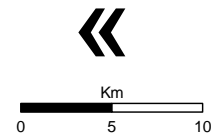
A. Landsat images 2007 (127/59 of 14 August 2008)



B. Landsat images 2009 (127/59 of 24 July 2009)



C. Landsat images 2010 (127/59 of 15 October 2010)

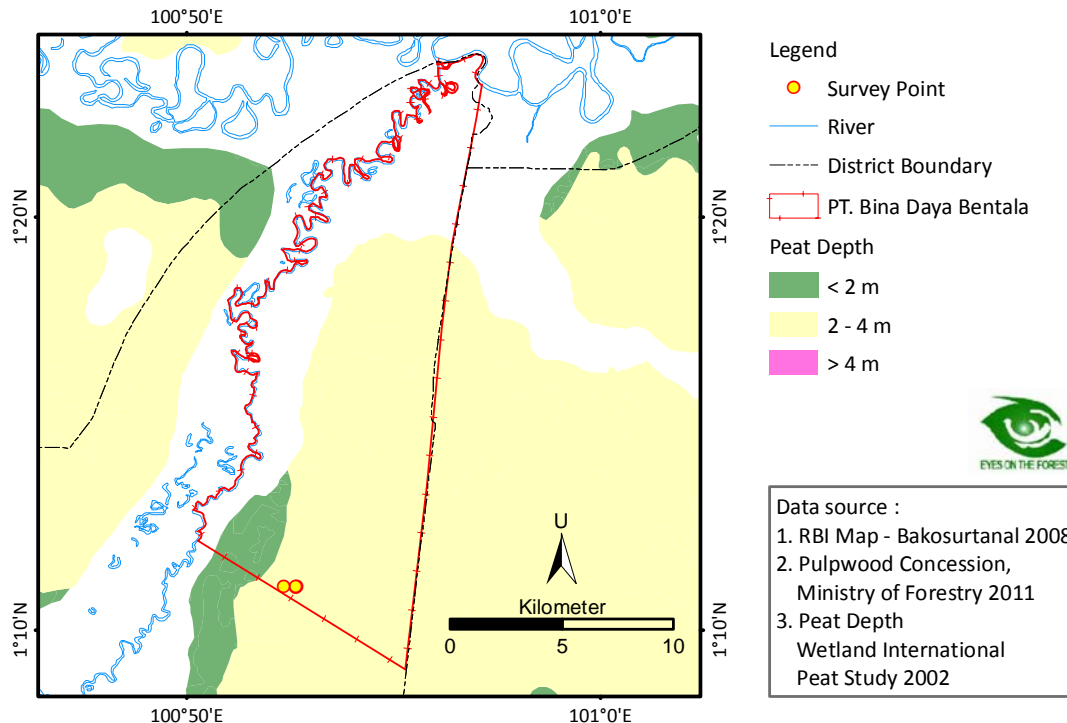


Legend

- Survey Point
- Pulpwood Concessions (PT. Bina Daya Bentala)

Map 1A. Map shows the natural forest cover in 2008 with the "status before RKT 2009-2010 issuance". As natural forests is shown in green color, **Maps 1B** and **1C** show satellite images from 2009-2010 that represent the area in the already logged site, which appear in pink color. This indicates the areas in the state "after RKT 2009 and 2010 issuance". Natural forest is indicated in green color, while the already logged site without main vegetation appears in pink.

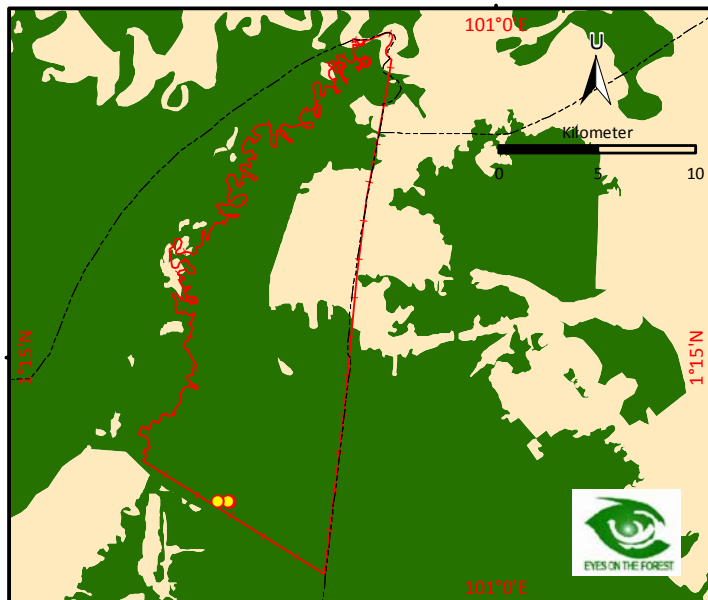
The following map shows that the PT Bina Daya Bentala concession mostly consist of peat with 2-4 meters depth.



Map 2. PT Bina Daya Bentala concession. Peatlands have depth between 2-4 meters, the majority of the concession (beige color) and only few of them are shallow peat.

Nearly the entire concession of PT Bina Daya Bentala is situated in peatlands that has a depth of peat between 2-4 meter based on Wetlands International & Canadian International Development Agency 2003: Map of Area of Peatland Distribution and Carbon Content 2002 Riau Province). Libo peat forest in Riau is one of global carbon basins. With the existence of very deep and rich carbon peat, only by cutting down the trees or damage the land would lead to significant carbon emissions that affect global climate change.

Map of PT Bina Daya Bentala concession based on the regulation on spatial plan:

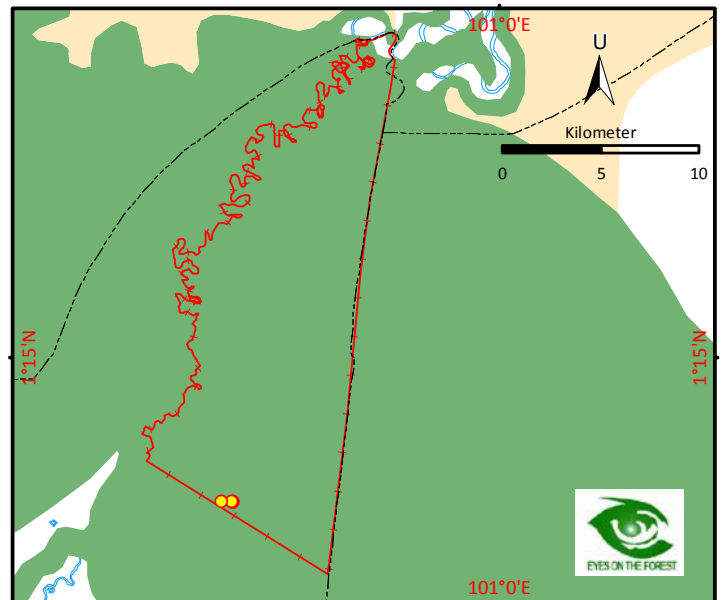


Legend

- Survey Point
- River
- District Boundary
- National Spatial Plan 2008
- Protection Forest
- Cultivation Area
- Pulpwood Concession
- PT. Bina Daya Bentala

Data Source :

1. RBI Map - Bakosurtanal 2008
2. Pulpwood Concession
Riau Forest Agency 2006, MoF 2005
3. National Spatial Plan 2008
Ministry of Public Work



Legend

- Survei Point
- River
- District Boundary
- Provincial Spatial Plan 1994
- Protected Area
- Referrals to Development
- Forestry Area
- PT. Bina Daya Bentala

Data Source :

1. RBI Map - Bakosurtanal 2008
2. Pulpwood Concession
Riau Forest Agency 2006,
MoF 2005
3. Provincial Spatial Plan 1994
Bappeda Riau

Map 3. PT Bina Daya Bentala concession in Libo forest block. According to the National Spatial Plan Designation by the Ministry of Public Works 2008 and Spatial Plan of Riau Province 1994, PT Bina Daya Bentala concession sits inside Protected Areas (green).

Government Regulation (PP) 26/2008 confirmed that peat soil with average depth of 3 meters or more located in the upstream river or wetlands regarded as "National Protected Forest Area". Article 50 of Government Regulation (PP) 26/2008 stipulates that the National Spatial Plan Designation consists of the National Protected Area and Cultivation Area which has nationally strategic values.

As shown by Map 2, most of PT Bina Daya Bentala concession area is located within the National Protected Area which contain a peat with the depth of more than 3 meters.

The permit granted to PT Bina Daya Bentala which is no longer compatible with the National Spatial Plan Designation that covers the National Protected Forest Areas could be canceled by the Government. While, the Government Regulation (PP) 26/2008 confirmed that peat soil with average depth of 3 meters or more which located in the upstream river or wetlands regarded as "National Protected Forest Area".

Based on the Law of the Republic of Indonesia Number 26 Year 2008 on Spatial Planning, stated in Article 77 paragraph (1) "At the time of the master plan is set, all space utilization that is incompatible with the spatial plan must be adapted to spatial planning through the utilization of adjustment space ". Furthermore, in Article 37 paragraph (6) "Permit on space uses that no longer appropriate due to changes in spatial plans can be cancelled by Government and local governments by providing adequate compensation." Moreover, field evidence indicating the natural forest in Libo block is in the state of the close to extinction.



Photo 1. Natural forests large-scale logging and massive canal drainage release the carbon emissions significantly. GPS: N1 ° 11'2 .27 "E100 ° 52'39 .24"



Photo 2. Loading felled timbers to tugboat as PT BDB clearcut natural forest and drain peat canals significantly. GPS N1 ° 11'3 .56 "E100 ° 52'21 .14"

Through a chain of custody investigation, EoF has proved natural forest logs delivered from PT Bina Daya Bentala concession to PT Indah Kiat Pulp & Paper, an APP's mill in Riau.

This report is monitoring conducted by Eyes on the Forest in May-June 2010 by using field survey method and interviews with several workers, field supervisors on the spot. The collected data covering the condition of the logging site and monitoring the timber delivery from loading site until delivered at PT IKPP pulp mill in Perawang town.

Condition in the logging site

Until May 2010 the total area that has been felled PT BDB has reached 3.000 hectares and EoF team found 6 units of excavators and 6 units inter cooler type's trucks which were ready to load in the wood chips. In natural forests logging, PT Bina Daya Bentala delegated or sub-contracted the work to PT BRL and PT PRJ contractors. From information EoF obtained from field workers', natural forest clearance by PT Bina Daya Bentala has begun in June 2009.

Delivery from loading site until delivered at PT IKPP pulp mill in Perawang

Transporting timber from PT Bina Daya Bentala logging site to PT IKPP pulp mill-Perawang is by using a logging intercooler type's truck with a capacity approximately 30 tons or about 35 m3. In this investigation, the EoF team followed the logging truck with police number L 7353 GE.

Here are the processes of timber delivery from PT Bina Daya Bentala HTI concession down to APP's PT IKPP pulp mill in Perawang;

a) Load/loading

- On May 24, 2010 there were found 6 (six) units of logging trucks in Stacking Wood Place (TPK) of PT Bina Daya Bentala, two logging trucks were identified with police number BM 8159 ZU, L 7353 GE and the 4 units were not identified.
- At 9:31 am, on May 24, 2010 truck with police number L 7353 GE, BM 8159 ZU loaded (loading) by using a unit of heavy equipment excavator, Hitachi brand. The loading site is at the coordinate point N. 1 11.05320 and E. 100 52 660. In the loading site, there was found a pile of wood as pulp raw material approximately 500 m3.
- At 10:15 am, on May 24, 2010 truck with police number L 7353 GE and BM 8159 ZU accomplished loading and rested.

- At 11:32 am, on May 24, 2010 truck with police number L 7353 GE and BM 8159 ZU exited the location and went through the three-junction Sontang-Duri at the coordinate point N. 1 11.94790 and E. 100 51.1763 0 to the PT IKPP-Perawang.

b) The truck stop / rest

- At 1:19 pm, on May 24, 2010, L 7353 GE truck stopped at a tire repair shop in Desa Petani Duri at the coordinate point N. 1 16.59490 and E. 101 5.84440
- At 3:13 pm, the truck was leaving the tire shop to continue the trip to PT IKPP pulp mill-Perawang.
- At 3:41 pm, on May 24, 2010, L 7353 GE truck was heading to the East Cross road Duri, at the coordinate point N. 1 16.07740 and E. 101 11.48810
- At 4:26 pm, on May 24, 2010, L 7353 GE truck stopped on East Cross road Duri at the coordinate point N. 1 13.84670 and E. 101 13.4502 0
- At 5:52 pm, on May 24, 2010 L 7353 GE truck stopped on the roadside of East Cross road Duri because of leaky tire at the coordinate point N1 ° 5'25 .64 "and E101 ° 16'37 .16"
- At 7:30 am, on May 25, 2010, truck with police number L 7353 GE stopped in a restaurant on their way to PT IKPP pulp mill-Perawang.

c) Delivered to PT IKPP pulp mill-Perawang

- At 8:12 am, on May 25, 2010, truck with police number L 7353 GE reached Perawang and got in through the entrance of PT IKPP pulp mill at the coordinate point E. 101 ° 36'42 .03 "N.0 ° 41'32 .98"

Photo-documents that show the delivery of timber from loading site until received at PT IKPP pulp mill-Perawang



Photo 3. Loading site in PT Bina Daya Bentala at GPS location $N1^{\circ} 11'3.19''$ and $E100^{\circ} 52'39.60''$.



Photo 4. Loading logs truck with police number L 7353 GE left PT Bina Daya Bentala concession and passed Purnama Sari Restaurant on Sontang-Duri at the GPS position N1 ° 11'56 .74 " and E100 ° 51'10 .41"



Photo 5. At 1:19 pm, on May 24, 2010, L 7353 GE truck stopped at a tire repair shop located on the edge of PT CPI Duri Desa Petani at the coordinate point N1 ° 16'35 .69 "and E101 ° 5'50 .66"



Photo 6. At 3:41 pm, on May 24, 2010, L 7353 ZL truck entered the East Cross road Duri precisely in Simpang Telkom Duri, at the coordinate point $N1^{\circ} 16'4.64''$ and $E101^{\circ} 11'29.29''$



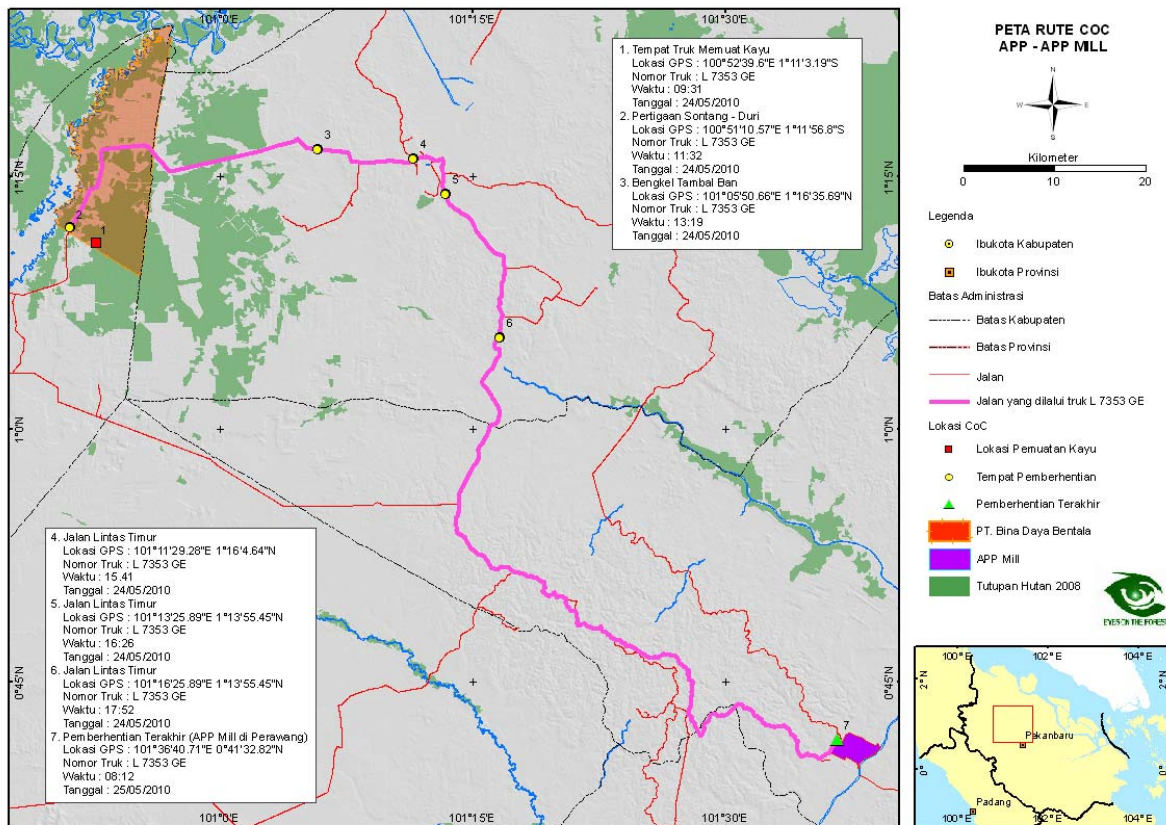
Photo 7. At 1:30 pm, on May 24, 2010, L 7353 ZL truck stopped at the solar refilling station 14-287-666 East Cross Road Duri, at the coordinate point N1 ° 8'30 .73 "and E101 ° 16'47 .78"



Photo 8. At 5:52 pm, on May 24, 2010, L 7353 ZL truck stopped at the roadside of East Cross Road Duri because of leaky tire at the coordinate point N1 ° 5'25 .64 "and E101 ° 16'37 .16"



Photo 9. At 8:12 am, on May 25, 2010, L 7353 ZL truck finally reached the entrance to the PT IKPP pulp mill-Perawang at the coordinate point NO ° 41'32 .82 "E101 ° 36'40 .71 and"



Map 4. A map is showing the delivery locations of wood from timber loading until it is received by PT IKPP in its pulp mill in Perawang, Siak Regency.

Eyes on the Forest calls:

This report shows that the APP does not carry out its commitment to the public to no longer source timber from natural forest as raw material for pulp and paper production. APP/Sinar Mas through its affiliated company PT Bina Daya Bentala also drives a devastation to Libo peat forest block and drains canals which releases carbon emissions and threatens REDD plus, as well as emission reduction commitment declared by Indonesian government and international community. Eyes on the Forest calls on APP business partners to consider cooperation with APP/Sinar Mas Group and do not easily believe in their claims of sustainability as well as the advertisements contained green washing.

For more information, please contact:

Afdhal Mahyuddin

Eyes on the Forest Editor at:

eof@eyesontheforest.or.id