



PT Suntura Gaja Pati and PT Ruas Utama Jaya, two affiliated companies to APP / SMG, continue clearcutting of Senepis Sumatran tiger forest, where the group contributes only less than 15 percent area for Senepis Buluhala Sumatran tiger conservation



**An Investigative Report
Published by Eyes on the Forest
May 2011**

Eyes on the Forest (EoF) is a coalition of environmental NGOs in Riau, Sumatra: WALHI Riau, Jikalahari "Riau Forest Rescue Network", and WWF-Indonesia, Riau Program. EoF monitors the status of natural forests in Riau Province, Sumatra and disseminates the information to readers around the world.

For more information about Eyes on the Forest, go to <http://www.eyesontheforest.or.id>

Email: eof@eyesontheforest.or.id

Cover photo: Logged timber from natural forest in PT Suntura Gaja Pati's HTI located in Senepis Forest Block. Picture by Eyes on the Forest team, May 2010, at position N1 ° 53'28 .25 "E101 ° 11'21 .41"

EoF investigates natural forest clearance in Senepis block by two timber suppliers of APP / Sinar Mas Group as the group keeps claiming such a Sumatran tiger sanctuary initiative

By several investigations on PT Suntura Gaja Pati and PT Ruas Utama Jaya in recent years, EoF coalition consistently considered that natural forest clearance by these two APP/Sinar Mas affiliated companies is likely destroying the tiger habitat in Senepis block. Genuinely, the proposal of Sumatran Tiger Conservation Area of 60,000 hectares covering the entire concession of PT Suntura Gaja Pati have been proposed several times by the Riau Province Forestry and Plantation Service, the Mayor of Dumai, the Riau BKSDA (Natural Resources Conservation Agency) and the Dumai local parliament until 2004.

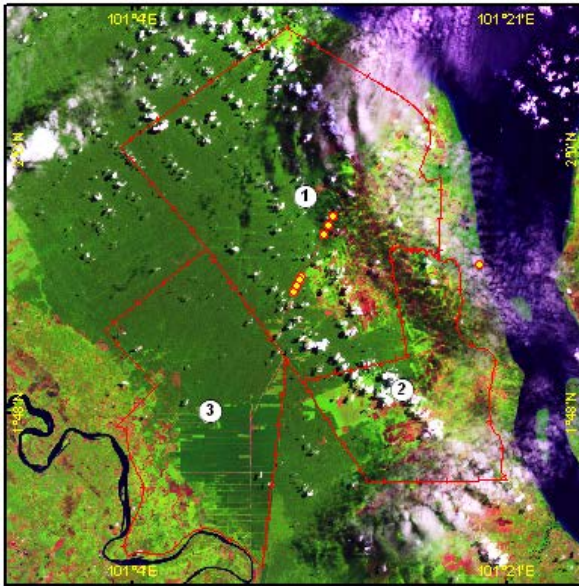
However, on 3 January 2006, the Ministry of Forestry finally approved that Senepis-Buluhala Tiger Conservation Area covering 106,086 ha area, where 86% or 90,956 hectares is located in PT Diamond Raya Timber, a certified selective logging concession (HPH) containing natural forest which is not managed for clearcutting just like industrial timber plantation (HTI). While, two affiliated companies to APP/Sinar Mas only burden the share of **less than 15%** for the conservation area whereas its global advertisements talk just as the pulp group has sacrificed much for Sumatran tiger protection. Ironically, PT Suntura Gaja Pati and PT Ruas Utama Jaya continue clearcutting of natural forest in the Sumatran tiger forest as the Ministry's letters saving their concessions from the Sumatran tiger conservation initiative.

Natural forests conversion by PT Suntura Gaja Pati and PT Ruas Utama Jaya in peat Senepis forest block where habitat of Sumatran tiger situated has been several times reported by Eyes on the Forest (EoF). In October 2008 EoF issued a report: *Asia Pulp & Paper / Sinar Mas Group Threatens Senepis Forest, Sumatran Tiger Habitat and Global Climate*; in July 2010 this coalition issued a report related to APP's logging, including in Senepis, entitled *Business as Usual in Riau, Sumatra*:

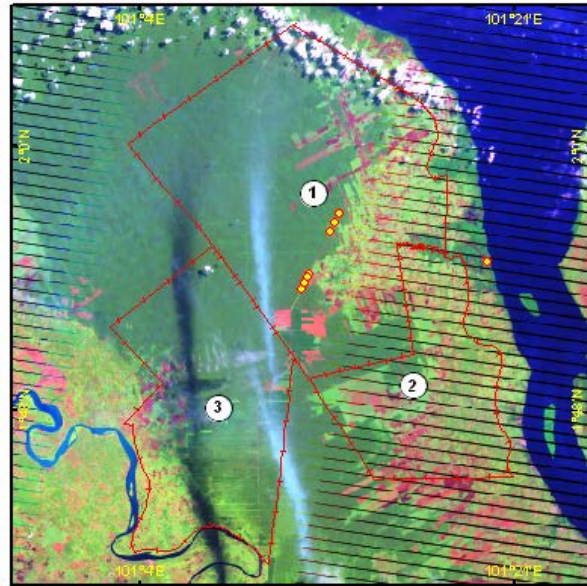
Pulp Industry Continues Clearance of Natural Forest, followed in December 2010, EoF calls on SMG/APP and APRIL to keep their promises: Stop conversion of natural forest and drainage of peat to produce pulp, Stop violation of the country's climate commitments.

Updated investigation

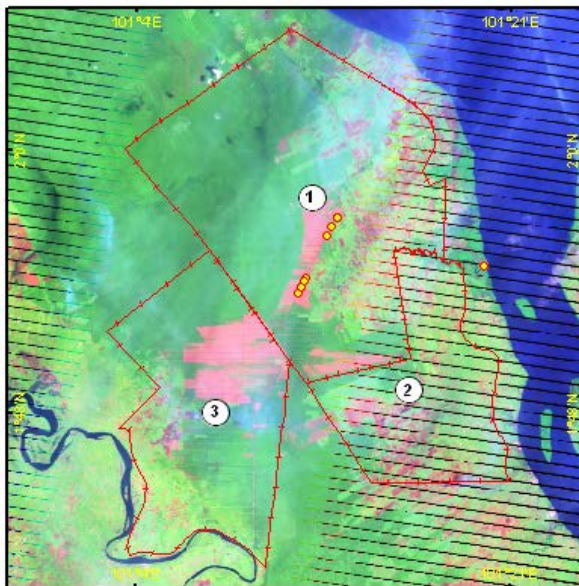
This report updated some information and photos related to natural forests clearance by PT Suntura Gaja Pati and PT Ruas Utama Jaya in 2009 and 2010. PT Suntura Gaja Pati and PT Ruas Utama Jaya in 2009 obtained natural forests logging permit covering **14,140** hectares with potentially mixed tropical hardwood amount to **1,128,450** cubic meter based on SK.19/BPHT-3/2009, 13 May 2009 and SK.03/BPHT-3 / 2009, 27 March 2009 junto SK.29/BPHT-3/2009, 7-9-2009. In 2010, PT Suntura Gaja Pati and PT Ruas Utama Jaya obtained natural forests logging permit covering **12,997** ha with mixed tropical wood equalling to **1,323,565** cubic meter based on SK. 21/BPHT-3/2010, 28 April 2010 and SK. 18/BPHT-3/2010, 26 March 2010. Thus, during 2009 to 2010, APP received raw materials from natural forest wood that felled by both companies amounted to **2,452,015** cubic meter or equals to fulfill annual raw material need by 30 percent.



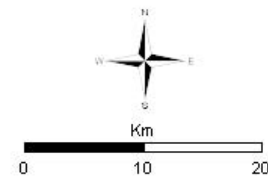
A. Landsat images 2007 (127/59 of 14 August 2008)





B. Landsat images 2009 (127/59 of 24 July 2009)



C. Landsat images 2010 (127/59 of 15 October 2010)



Legend

-  Survey Point
-  Pulpwood Concessions
- 1, PT. Suntara Gajapati
- 2, PT. Ruas Utama jaya
- 3, PT. Ruas Utama jaya

Map 1A, 1B and 1C. Map 1A shows the natural forest cover in 2008 with the "status before RKT 2009-2010 issuance". Natural forest is shown in green color, while Map 1B and Map 1C show the 2009-2010 satellite images that depict the area in the already logged site, appears in *pink color*. This indicates the areas in the state "after RKT, 2009 and 2010 issuance". Natural forest is indicated in *green*, while the already logged site without main vegetation appears in *pink*.

Senepis - Buluhala area for Sumatran Tiger Conservation Site

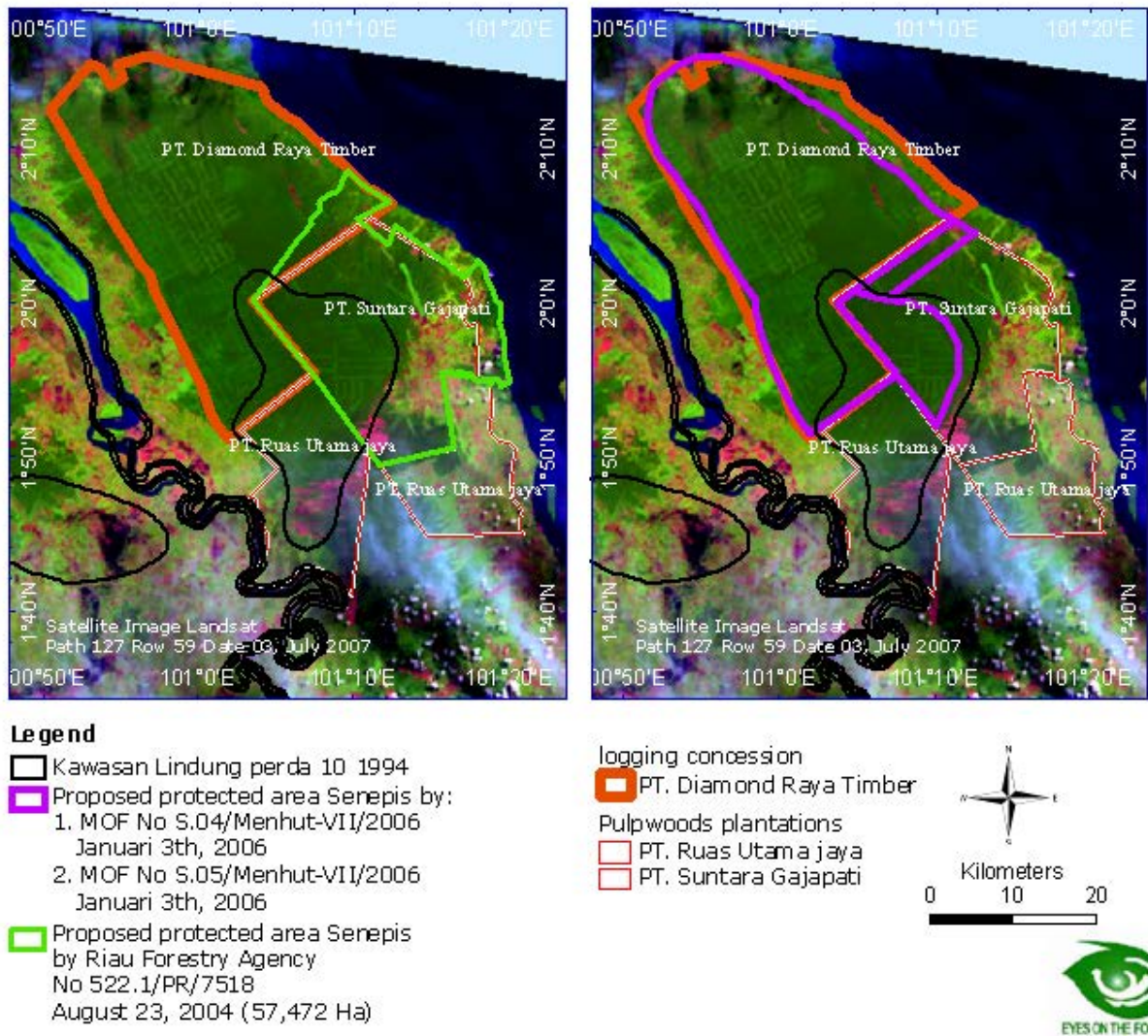
As published by EoF Investigative Report on Senepis in October 2008, the natural forest clearance by PT Suntura Gaja Pati and PT Ruas Utama Jaya is likely a destruction of tiger habitat which previously has been planned to be protected by local government from all levels. Genuinely, the proposal of Sumatran Tiger Conservation Area of 60,000 hectares covering the entire concession of PT Suntura Gaja Pati have been proposed several times by the Riau Province Forestry and Plantation Service, the Mayor of Dumai, the Riau BKSDA (Natural Resources Conservation Agency) and the Dumai local parliament until 2004.

However, on 3 January 2006, the Ministry of Forestry finally published two letters concerning to approval for establishment of Senepis-Buluhala Tiger Conservation Area, with a size of 106,086 ha (*thick purple line*). At first impression, it appears the fact that Tiger Conservation Area (106,086 ha) of approximately 40,000 ha is larger than previously National Park proposal (60,000 ha), which might sound like good news. However, a more in-depth study shows that Sumatran tigers seem to be expelled from their forests due to massive deforestation:

- ❖ From the new version of Tiger Conservation Area initiative, **86% (90,956 hectares)** out of total area is located in PT Diamond Raya Timber concession which has the natural forest and is not prepared for forest conversion. Therefore, there's no positive impact for the tigers as the forest concession has been certified by LEI and FSC that identical with "Tiger Conservation Area".
- ❖ At least 11% (11,275 hectares) is included to the Protected Area; Land Use Plan of Riau Province (RTRWP 1994) has put it aside to be protected (Map 1, black outline). Under existing rules, the natural forest in protected areas should not be converted, hence there are fresh benefits for the tiger conservation that created by the called Sumatran tiger sanctuary working group.

- ❖ **Only 4% (3,850 hectares)** is located at the inside of PT Suntara Gajapati concession, where protected areas overlap with the concession. It is quite fundamental loss than the size the original proposed national park that seems to protect all forests in PT Suntara Gajapati (46,908 hectares).

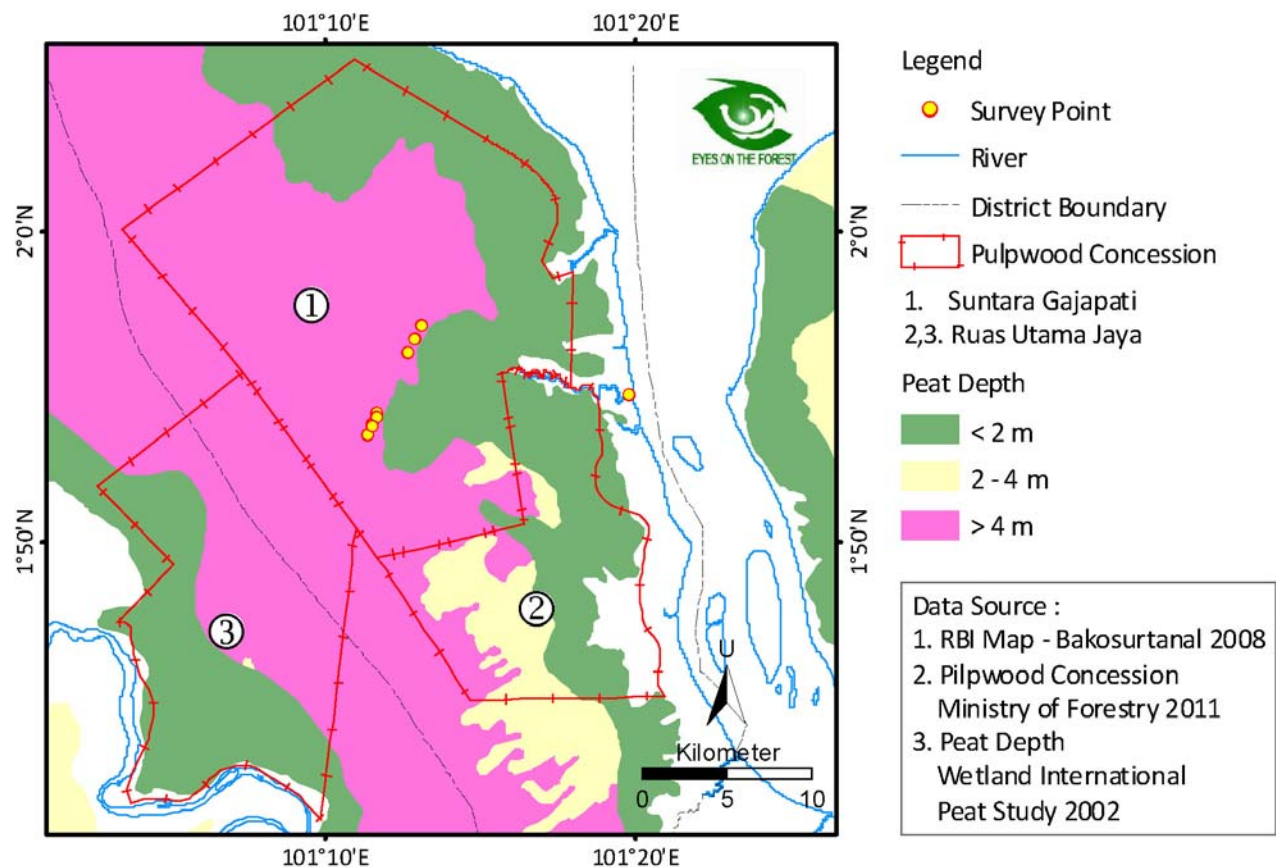
It is highly questionable if then APP claimed through its PR and advertisement citing that the company would contribute much to the 106,000-ha Senepis-Buluhala Sumatran Tiger Sanctuary. In fact, most of the sanctuary area is located inside selective logging concession (HPH license), PT Diamond Raya Timber, which obtained FSC certificate that is not associated with it (map 2); while APP/Sinar Mas would continue to clear the contagious tiger forest from the south (Map 1). At least 60% of all 245 human-and-tiger conflicts in Riau during 1997 to 2009 occurred in the area, claiming 27 human and 8 tigers death toll, indicating the importance of this area for the tigers who suffer from the deadly impact made by APP/Sinar Mas natural forest clearance.



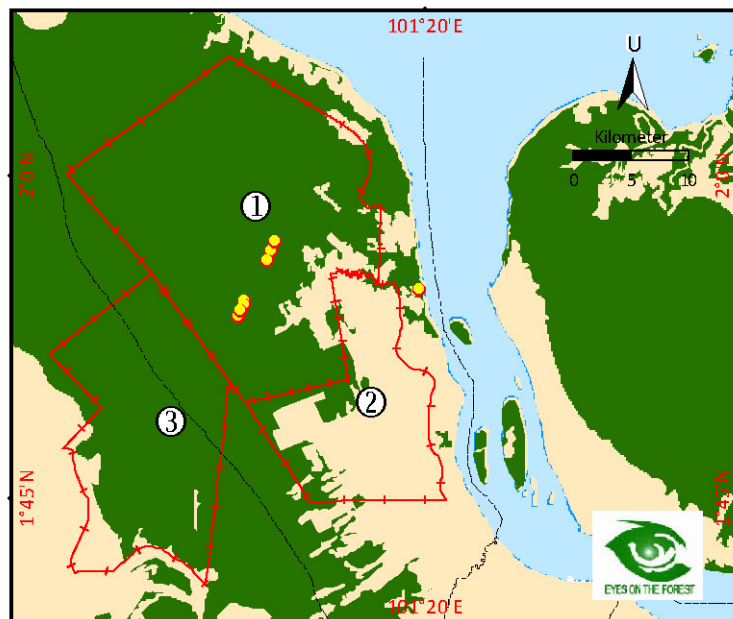
Map 2. Two formal proposals for Sumatran Tiger protected areas in Senepis block: Senepis-Buluhala Sumatran Tiger National Park proposed by Riau Forestry Service (**thick green line**) and Conservation area proposed by the Ministry of Forestry (**purple line**), shown with FSC-certified selective logging concession of PT Diamond Raya Timber (**thick brown line in the north**), three pulpwood concessions affiliated to APP/SMG, one of them is owned by PT Suntura Gaja Pati and two belong to PT Ruas Utama Jaya (RUJ) (**red line**).

Does natural forest logging by PT Suntura Gaja Pati and PT Ruas Utama Jaya in the Peat swamp forest of Senepis block potentially break the law?

PT Suntura Gaja Pati and PT Ruas Utama Jaya concession as a whole in the Peat swamp forest of Senepis block have a depth of peat more than 4 feet by Wetlands International & Canadian International Development Agency 2003: Map of Area of Peatland Distribution and Carbon Content 2002 Riau Province; (map 3)



Map 3. PT Suntura Gaja Pati and PT Ruas Utama Jaya concession as a whole in the Peat swamp forest of Senepis block have depth of peat more than 4 feet (pink color)

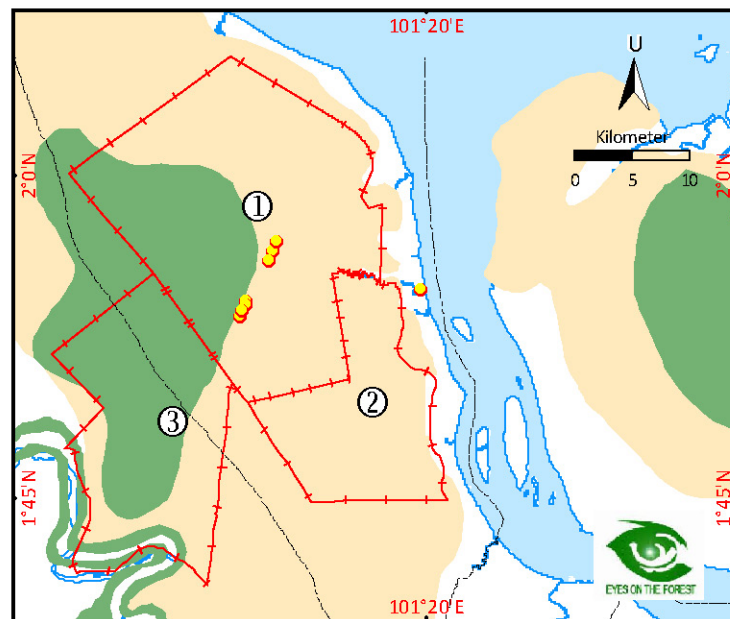


Legend

- Survey Point
- River
- District Boundary
- National Spatial Plan 2008
- Protection Forest
- Cultivation Area
- Pulpwood Concession
- 1, PT. Suntura Gajah Pati
- 2,3 PT. Ruas Utama Jaya

Data Source :

1. RBI Map - Bakosurtanal 2008
2. Pulpwood Concession - Ministry of Forestry 2011
3. National Spatial Plan 2008 Ministry of Public Works



Legend

- Survey Point
- River
- District Boundary
- Provincial Spatial Plan 1994
- Protection Forest
- Development Forest Area
- Pulpwood Concession
- 1, PT. Suntura Gajah Pati
- 2,3 PT. Ruas Utama Jaya

Data Source :

1. RBI Map - Bakosurtanal 2008
2. Pulpwood Concession Ministry of Forestry 2011
3. Provincial Spatial Plan 1994 Riau Province Government

Map 4. PT Suntura Gaja Pati and PT Ruas Utama Jaya concessions in the Peat swamp forest of Senepis block. According to the National Spatial Plan issued by Ministry of Public Works in 2008, most of the area is included to the National Protection Forest (**green**). And according to the Riau Province Land Use (RTRWP) most of them is also included to the Protection Forest.

Based on the map 4 above, most of **PT Suntura Gaja Pati and PT Ruas Utama Jaya concessions area is located on deep peat swamp forest of Senepis block** including the National Protected Area and Forest Protection by RTRWP Riau. that is because this area has more than 3 meters depth of peat. Government Regulation (PP) 26/2008 confirmed that peat soil with average depth of 3 meters or

more located in the upstream river or wetlands regarded as "National Protected Forest Area".

Based on the Law of the Republic of Indonesia Number 26 Year 2008 on Spatial Planning, stated in Article 77 paragraph (1) "At the time of the master plan is set, all space utilization that is incompatible with the spatial plan must be adapted to spatial planning through the utilization of adjustment space ". Furthermore, in Article 37 paragraph (6) "Permit on space uses that no longer appropriate due to changes in spatial plans can be cancelled by Government and local governments by providing adequate compensation."



Photo 1: Large-scale felling of natural forest and canal drainage which is bordered with natural forests (position N1 ° 54'11 .60 "E101 ° 11'41 .45")



Photo 2. Logged timber sourced from natural forest in PT Suntura Gaja Pati's HTI concession located in Senepis Forest Block. Picture by Eyes on the Forest team, May 2010, at the position N 1 ° 53'28 .25 "E101 ° 11'21 .41"



Photo 2. Logged timber from natural forest in PT Suntara Gaja Pati's HTI located in Senepis forest block, a Sumatran tiger home in Riau province. Picture by Eyes on the Forest team, May 2010, at the position N 1 ° 53'45 .93 "E101 ° 11'30 .07"



Photo 3. Logging of natural forest in concession area affiliated to APP/SMG, PT Suntura Gaja Pati in peat swamp forest of Senepis block, a home to the Sumatran tiger, which has peat depth of more than 4 meters. GPS Location: N1 ° 54'1 .88 "E101 ° 11'38 .19"



Photo 4. Heavy equipment and logged timbers pile that felled from natural forest in PT Suntura Gaja Pati's concession in Senepis forest block. Picture by Eyes on the Forest team, May 2010, at the position N 1 ° 56'31 .93"





Photos 5 & 6. Transporting felled logs taken from natural forest by trucks and tug boat in PT Suntura Gaja Pati's HTI concession in peat swamp forest of Senepis block, a home to the Sumatran tiger, which is peat depth is more than 4 meters. Position: N 1° 54'45 .68 "E101 ° 19'46 .91"





Photo 7 & 8. Natural forest clearance in PT Suntara Gaja Pati's HTI concession in peat swamp forest of Senepis block, a home to the Sumatran tiger, which has peat depth of more than 4 meters. GPS Location: N1 ° 56'56 .88 "E101 ° 13'6 .80" Photo by Eyes on the Forest team, July 29, 2010,



Photo 9. Natural forests logging in PT Suntura Gaja Pati's HTI in Peat swamp forest of Senepis block, home to the Sumatran tiger, which left only small trees that soon to be felled. GPS Location: N1°56'6.62" E101°12'41.28"



Photo 10. Logged timber from natural forests in PT Suntara Gaja Pati's concession in Senepis forest block. Photo by Eyes on the Forest team, July 29, 2010, at position N 1°53'44.80" E101°11'29.60"

END

**For further information please contact
EoF Editor
Afdhal Mahyuddin
e-mail: eof@eyesontheforest.or.id**