



PT Siak Raya Timber, a company affiliated to APRIL, continues clearcutting of natural forest in Tesso Nilo Block as it shows that APRIL violates its commitment not to use timber from natural forest that potentially contains HCVF



**Investigative Report
Published by Eyes on the Forest
May 2011**

Eyes on the Forest (EoF) is a coalition of environmental NGOs in Riau, Sumatra: WALHI Riau, Jikalahari "Riau Forest Rescue Network", and WWF-Indonesia, Riau Program. EoF monitors the status of natural forests in Riau Province, Sumatra and disseminates the information to readers around the world.

For more information about Eyes on the Forest, go to <http://www.eyesontheforest.or.id>

Email: eof@eyesontheforest.or.id

Cover photo: Woods from natural forest in pulpwood concession of PT Siak Raya Timber in Tesso Nilo forest block. Photo by Eyes on the Forest, July 2010, in position N 0°2'58.97 E101°33'26.16

Natural forests clearance by PT Siak Raya Timber, an affiliated company to Asian Pacific Resources International Holdings Limited (APRIL) , in area where HCVF assessment has yet to complete

In 2009, PT Siak Raya Timber (SRT) is a timber supplier and pulpwood plantation company that affiliated to PT Riau Andalan Pulp & Paper (RAPP) in Riau province or under umbrella of APRIL. PT Siak Raya Timber obtained logging license based upon decree of Forestry Ministry's SK.20/BPHT-3/2009, 19 June 2009, covering an area of 350 hectares with potential timber of 28,970 cubic meter.

As PT Siak Raya Timber is a company affiliated to APRIL, the group should have a full commitment to sustainability and should comply with it before conducting an assessment or review of High Conservation Value Forests (HCVF). So far, EoF has not received any information that this company has conducted HCVF assessment yet. Since 2005, APRIL has committed to its buyers, investors and the general public to protect High Conservation Value Forests (HCVF) professionally and independently identified following the stakeholder driven HCVF Toolkit for Indonesia (see APRIL's Fact Sheet at <http://www.aprilasia.com/images/stories/hcvf.pdf>)

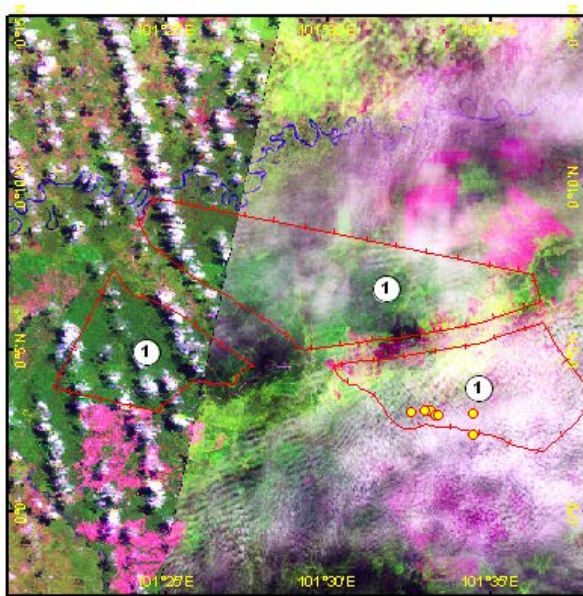
The area of PT Siak Raya Timber is located in Tesso Nilo forest block and it's significantly potential for containing conservation value which is including one elephant pouch in Riau (**map 2**). Tesso Nilo block is also a Sumatran tiger forest where concurrently contains an important watershed for more than 40,000 people living in the surrounding 22 villages. EoF also found land disputes occurred in the concession involving PT Siak Raya Timber against the local communities where takes place in the newly-logged area planted with palm oil plantation claimed by groups of people as theirs (**photos 3, 4 and 7**). EoF has not identified in details of the land dispute occurring between PT SRT and the community yet.

Considering the importance of High Conservation Value Forests, EoF calls APRIL to stop the forest clearance in this area and urges the group to identify HCVF in collaboration with stakeholders prior to starting to log any natural forest inside and

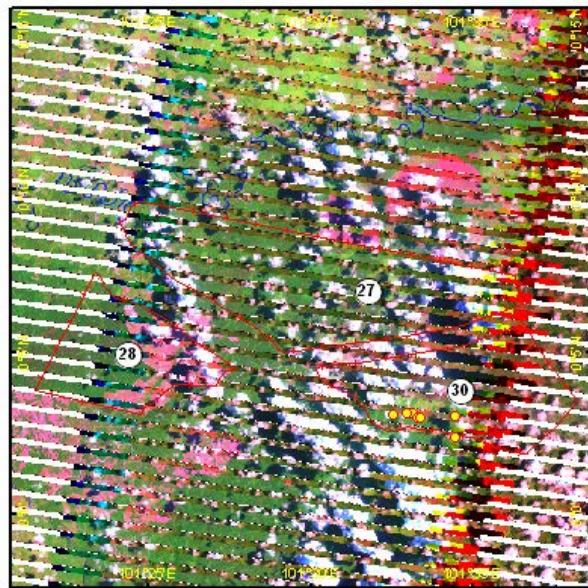
/or purchase any felled timber from these or other concessions, in order to carry out its own public policy properly.

The concept of HCVF was first developed by the Forest Stewardship Council (FSC) in 1999 as their "Principle 9: Maintenance of High Conservation Value Forests" to ensure that the High Conservation Values are protected, FSC Principle 9 states that: *"Management activities in high conservation value forests shall always be considered in the context of precautionary approach."* In practice, this means that no forests should be cleared without any prior assessment of High Conservation Values in the forest and its surrounding landscape combined with the identification of the measures needed to maintain and enhance those values.

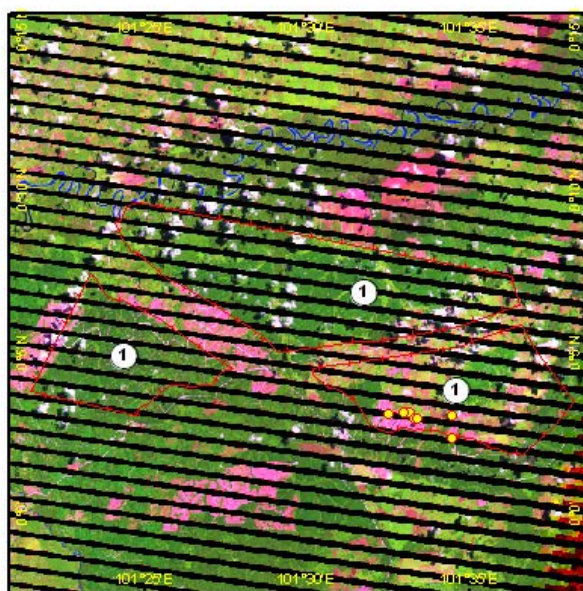
EoF considers clearance inside and wood sourcing operations by PT SRT has violated APRIL's own public policy which pledged not to source timber from areas of high conservation value.



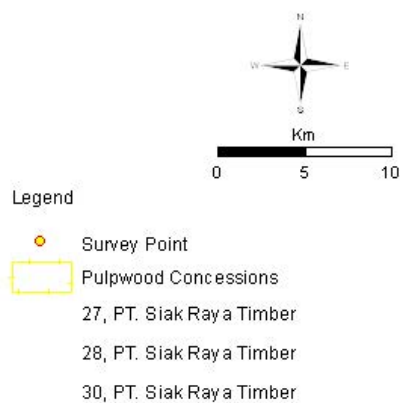
A. Landsat images 2007 (126/60 of 22 July 2008)



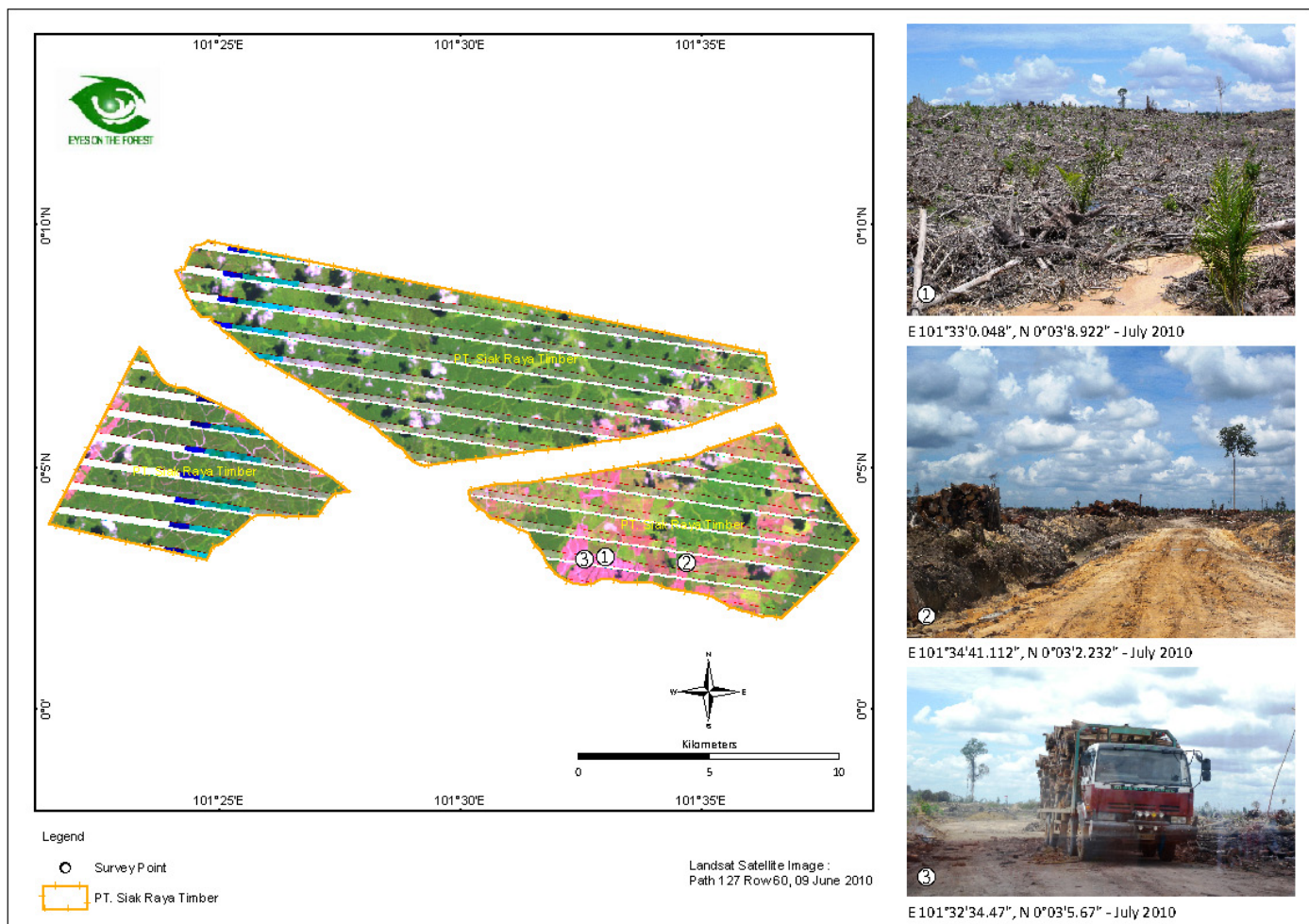
B. Landsat images 2009 (127/60 of 06 June 2009)



C. Landsat images 2010 (127/60 of 09 June 2010)



Map 1A Map shows the natural forest cover in 2008 with the "status before RKT 2009 issuance". Natural forest is shown in green color, **Maps 1B** and **1C** show satellite images 2009-2010 that illustrate the areas in the already logged site, as indicated in pink color. This indicates the areas in the state "after RKT 2009 issuance". Natural forest shown with green color, while the already logged site seemed without major vegetation appears in pink.



Map 2 : Distribution of Sumatran elephants in Tesso Nilo block

The area of PT Siak Raya Timber is located in Tesso Nilo forest block and the logging site by the company potentially contain high conservation value area including a Sumatran elephant pouch in Riau.

Photo gallery



Photo 1. Transportation of logged timber sourced from natural forest in HTI concession of PT Siak Raya Timber in Tesso Nilo forest block. Picture taken by Eyes on the Forest, July 2010, at position N 0 ° 3'5 .66 E101 ° 32'34 .47



Photo 2. Palm oil plantation sits inside HTI concession of PT Siak Raya Timber in Tesso Nilo forest block which shows the concession holder lacks of responsibility. Picture by Eyes on the Forest team, July 2010, position N 0° 3'5 .66 E101 ° 32'34 .47



Photo 3. Palm oil plantation in HTI concession of PT Siak Raya Timber in Tesso Nilo forest block. Picture by Eyes on the Forest team, July 2010, at the coordinate point NO ° 3'8 .67 E101 ° 33'12 .25



Photo 4. Natural forest clearance by PT Siak Raya Timber, an affiliated company to PT RAPP and APRIL, in Riau, for pulpwood plantation expansion. In fact, this logging site has not done a study of High Conservation Value Forests (HCVF). Picture by Eyes on the Forest, July 2010, in position N 0° 2'59 .12 E101 ° 33'20 .38



Photo 5. Logged timber from natural forest in HTI concession of PT Siak Raya Timber in Tesso Nilo forest block. Picture by Eyes on the Forest, July 2010, in position N 0° 2'22 .61 E101 ° 34'30 .49



Photo 6. Palm plantation in HTI concession of PT Siak Raya Timber in Tesso Nilo forest block. Picture by Eyes on the Forest team, July 2010, at the coordinate point N0 ° 3'8 .92 E101 ° 33'0 .05



Photo 7. Billboard read name of HTI concession of PT Siak Raya Timber and its license number. Picture by Eyes on the Forest, July 2010, in position N 0° 3'3 .54 E101 ° 34'29 .19

END

For further information please contact:
Afdhal Mahyuddin
Eyes on the Forest Editor
Email : eof@eyesontheforest.or.id